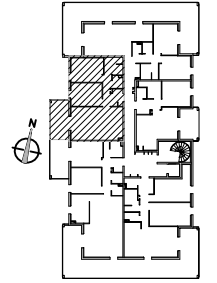




J 2 L  
15 bis rue du Pont Saint Jean  
- 24000 BERGERAC -



LOGT N° A 7 3 PIECES

BATIMENT A R+1

SURFACES HABITABLES

|                |                        |
|----------------|------------------------|
| SEJOUR+CUISINE | = 29.47 m <sup>2</sup> |
| CHAMBRE 1      | = 13.70 m <sup>2</sup> |
| CHAMBRE 2      | = 12.72 m <sup>2</sup> |
| ENTREE+ PL     | = 5.31 m <sup>2</sup>  |
| S.D.B          | = 6.01 m <sup>2</sup>  |
| W.C            | = 2.21 m <sup>2</sup>  |
| DGT            | = 3.00 m <sup>2</sup>  |

TOTAL HABITABLE = 72.42 m<sup>2</sup>

TERRASSE = 11.54 m<sup>2</sup>

